

A diagram of a wrap skirt pattern piece. It features a dashed line for the waist curve at the top, a solid line for the side seam, and a dashed line for the hem. A vertical dashed line on the left indicates a fold line. A grey line runs vertically along the left side, representing the seam allowance.

Wrap Skirt

34" Waist

20" length

<http://sewmamasew.com/blog2/2007/05/wrap-skirt-pattern-draft-tutorial/>

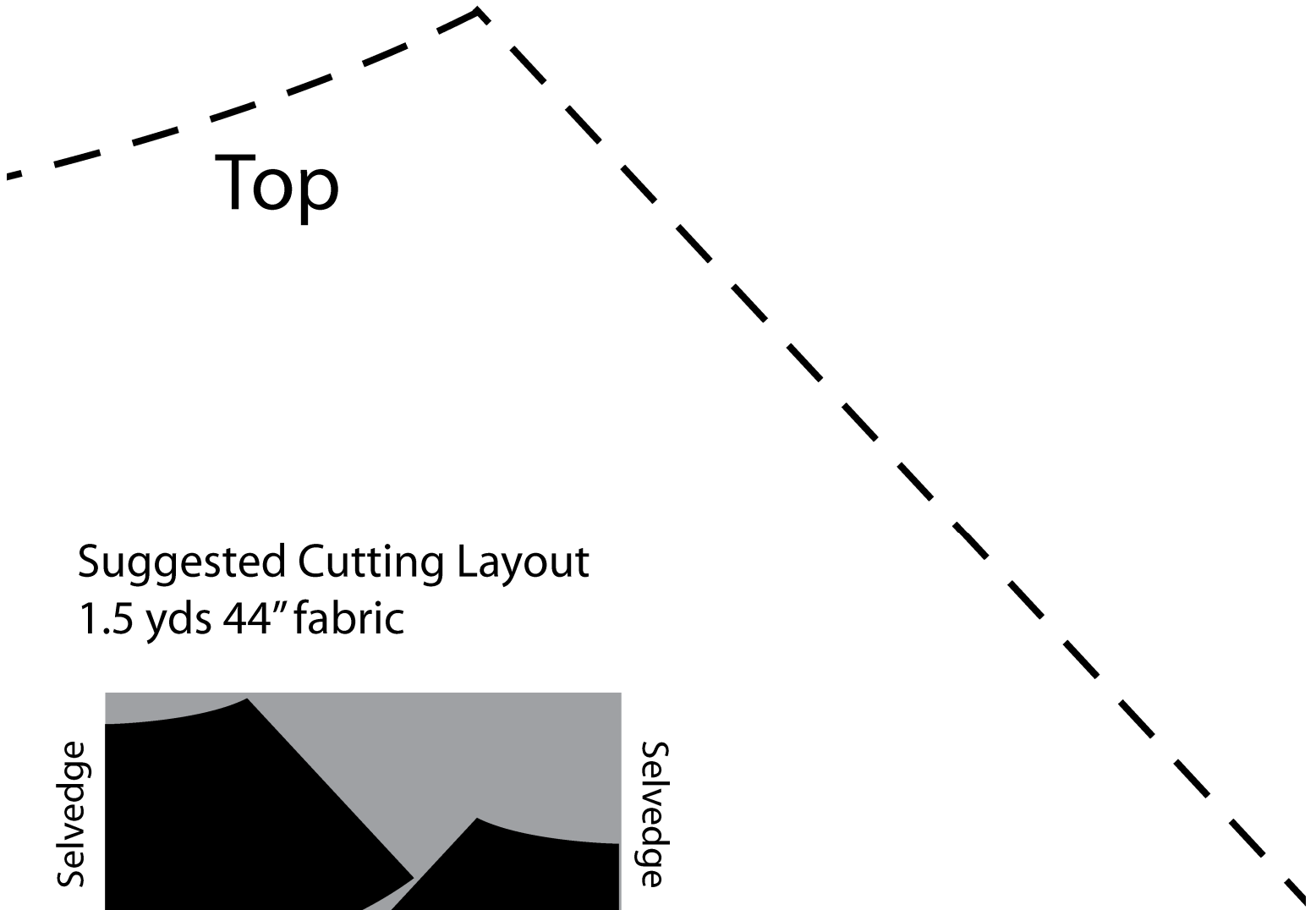
For 44" Fabric



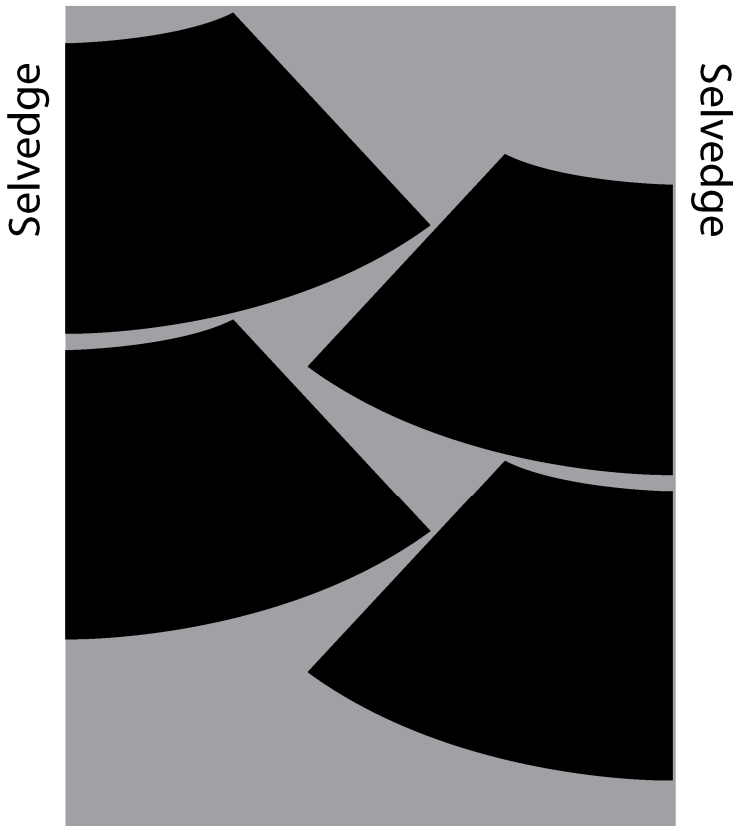
Cut 2 from each fabric with
pattern right side up

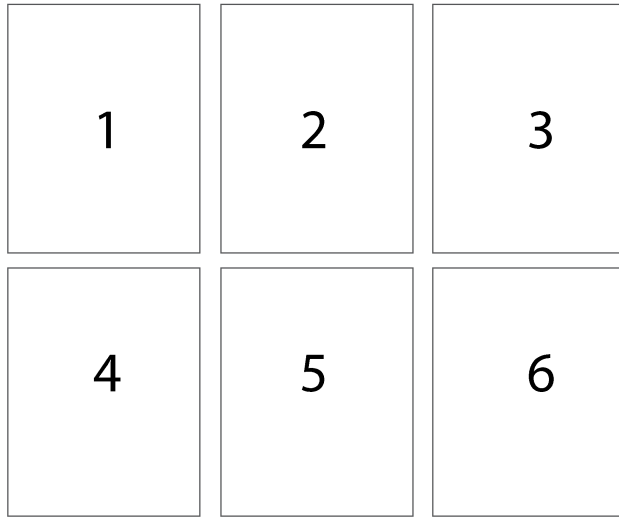
Cut 2 from each fabric with
pattern right side down

Grey line is 1/2" seam allowance
for seam in lieu of fold

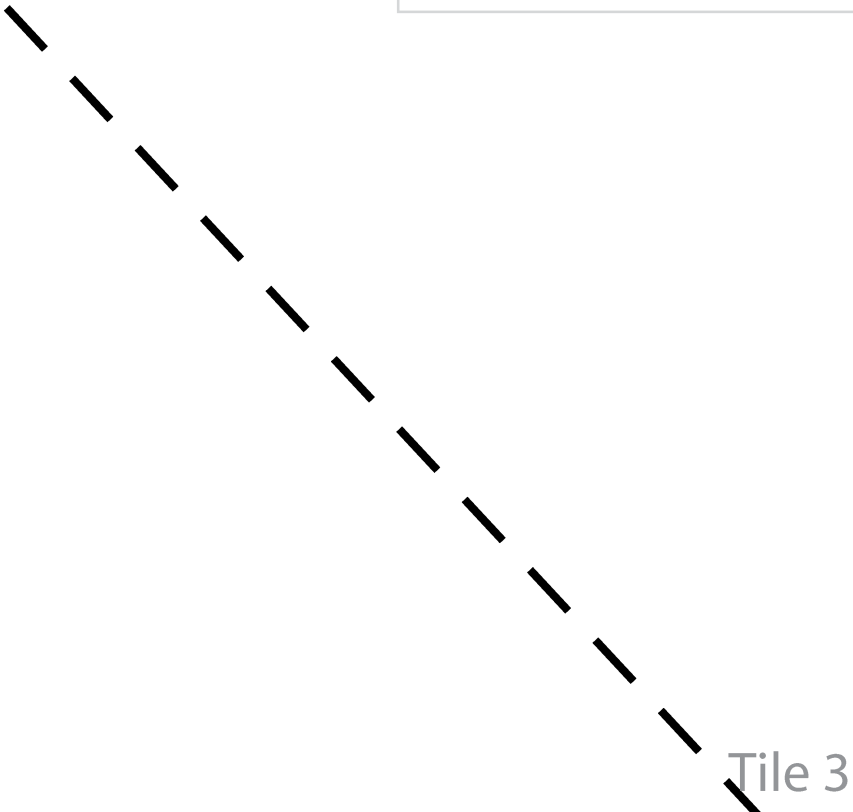


Suggested Cutting Layout
1.5 yds 44" fabric





Piece tiles as above
DO NOT OVERLAP
Butt the edges against one
another and tape together.



For 58/60" Fabric



Cut on fold

Cut 2 of each fabric

Suggested Cutting Layout
1.25 yds 58/60" fabric

Fold



Total Yardage for this particular size:

44" (assuming functional 40" after washing, selvedge removal)

1.5 yds fabric 1

1.5 yds fabric 2

.5 yd waistband fabric

58/60" (assuming functional 56")

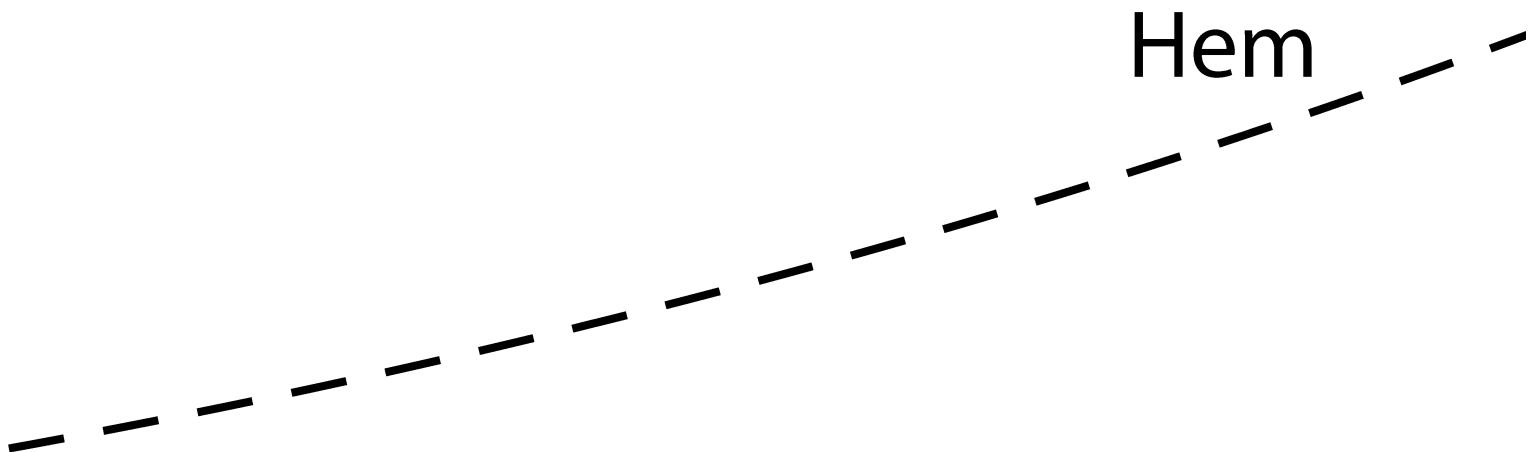
1.25 yds fabric 1

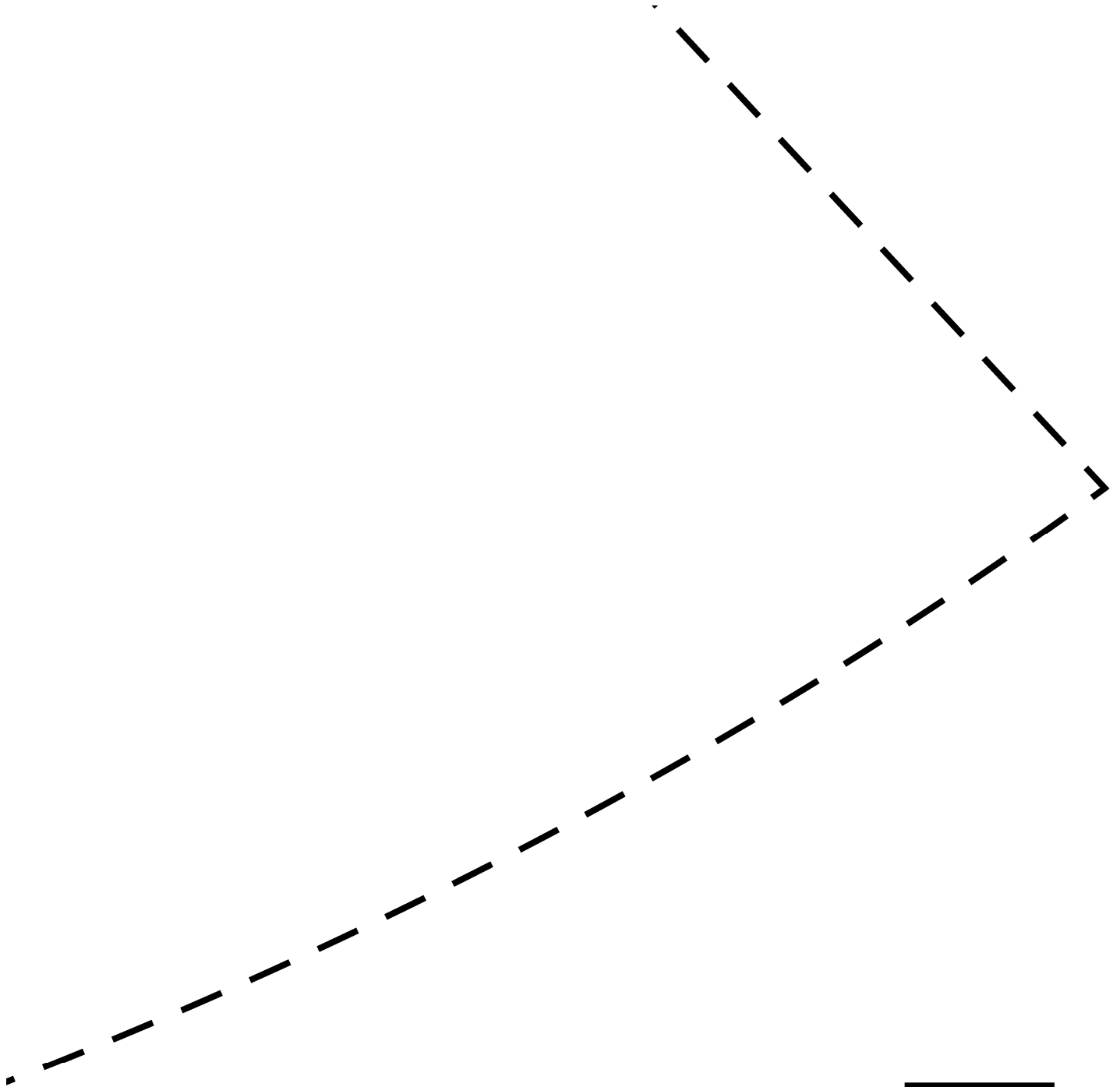
1.25 yds fabric 2

.33 yd waistband fabric*

* I think 2 WOF is sufficient for waistband/tie
in this width fabric. .5yd needed if you
disagree

Or, you can likely squeeze the ~120" needed from the extra
width from one of your skirt fabrics when using
60" fabric





The square is 1"
Check size after printing
Print "Actual Size" or similar
DO NOT SCALE